

CastAway Processing SOP

This SOP is designed to explain how to get data from the CastAway unit, through the CastAway software, into Velocipy and the normal NOAA workflow. For instruction on how to perform a cast with the CastAway please refer to CastAway's user's manual.

1. Conduct the CTD Cast.
 - a. Refer to CastAway's user's manual or the instructions included in yellow CastAway box.
2. Download the cast to the computer running CastAway by bringing the CastAway CTD within range of the Bluetooth sensor on the computer.
 - a. This will only work on acquisition systems that do not have IT policies loaded onto them.
3. Download status can be monitored under the "Devices" tab of the CastAway software.
 - a. This is where you can check the CastAway's battery and memory status.

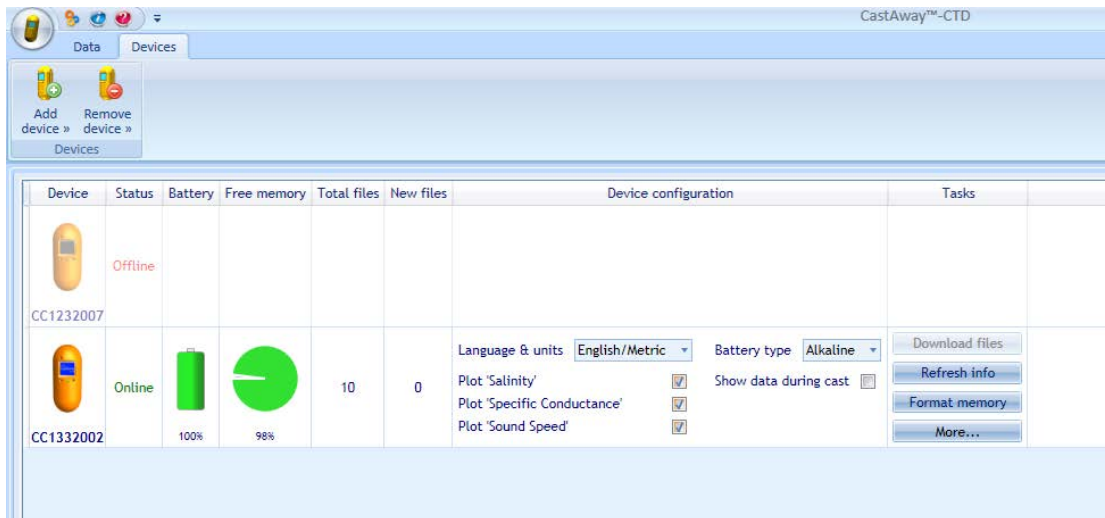


Figure 1, Devices tab of CastAway software.

- Once the cast has downloaded, you can find it in the “Data” tab of the CastAway software. Generally, the newest casts are listed first.
- Select the cast you wish to export and select “Export”.

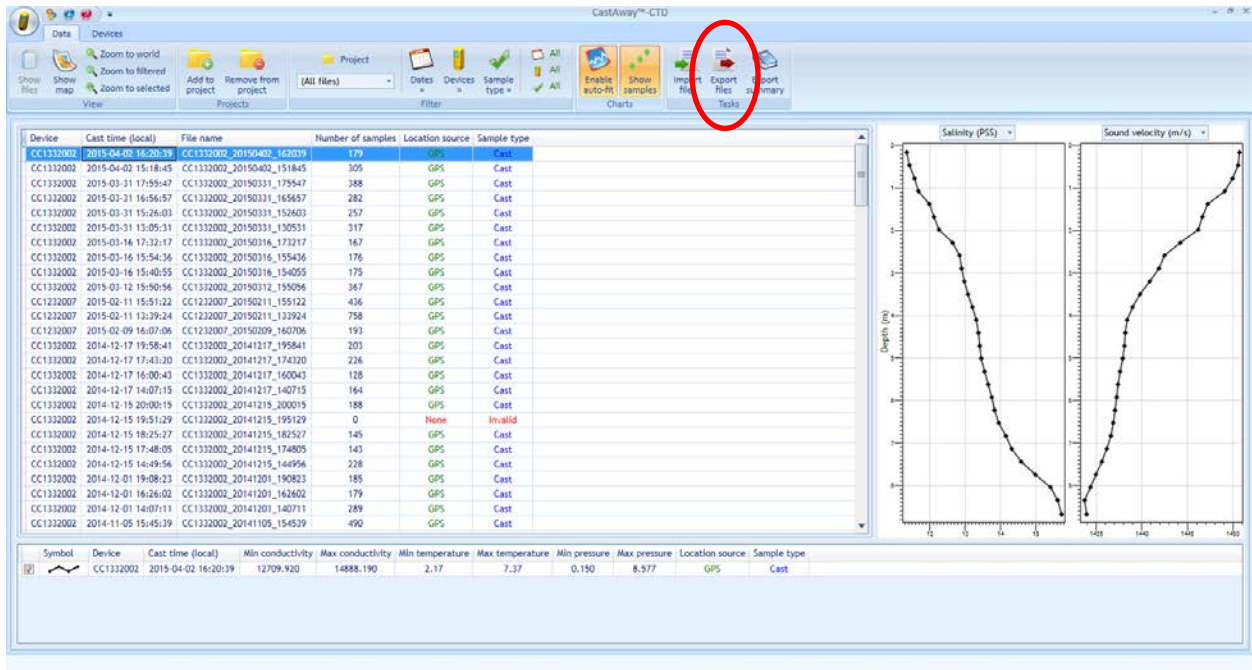


Figure 2, Data tab of CastAway software.

6. The export window appears; select the options as shown below.
 - a. In order to have the file correctly input into Velocipy, the following setting must be used.
 - b. In the “Fields” box, all of the options are checked.

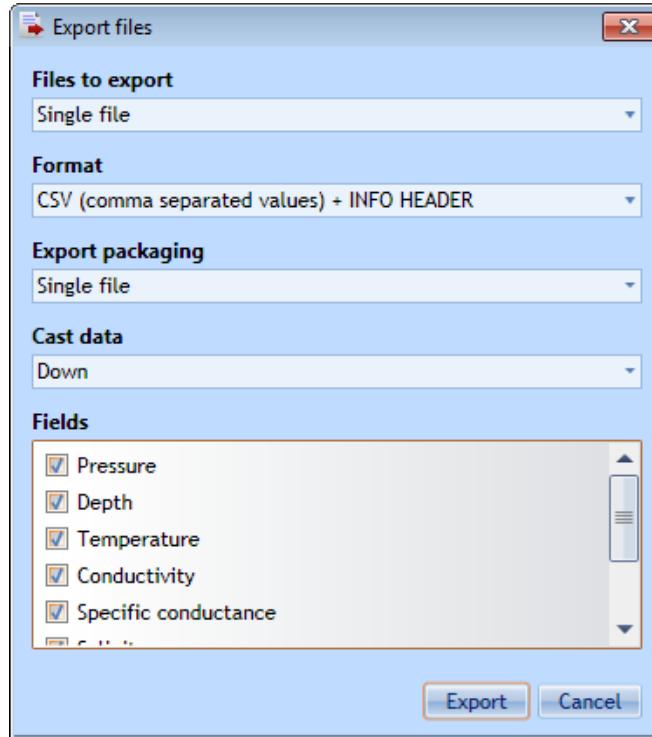


Figure 3, Export settings from CastAway software.

7. Save the file in the location of your choosing.

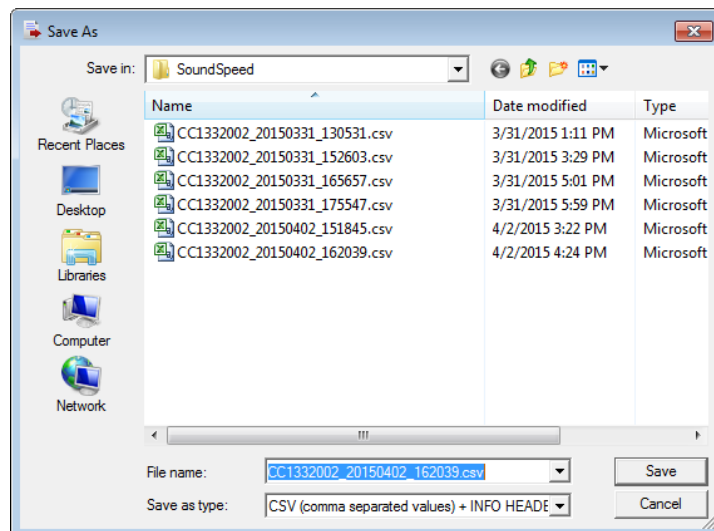


Figure 4, Save options for *.csv CastAway file.

8. We're now done with the CastAway software. Open Velocipy and select "Load Profiles".

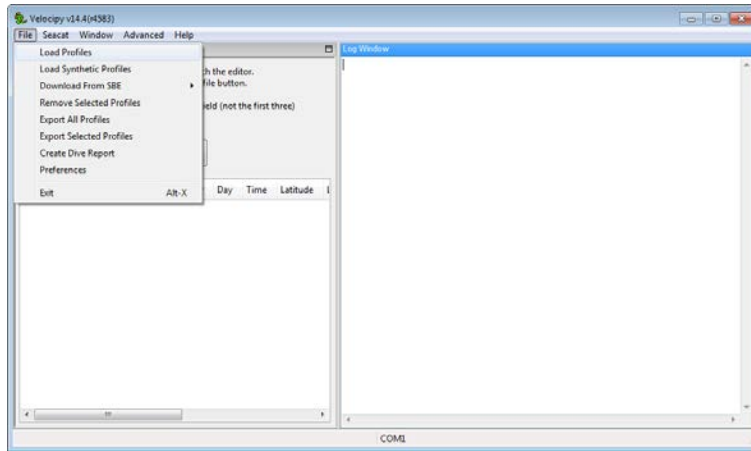


Figure 5, Velocipy main screen.

9. Navigate to where you saved the *.csv CastAway file and select open.

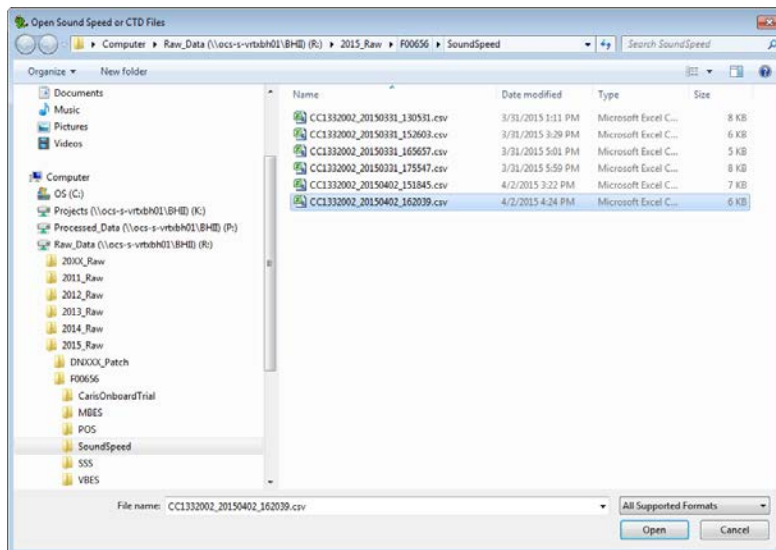


Figure 6, Selecting *.csv file to open in Velocipy.

10. Input metadata, and verify SV / Temp / Sal values are within expected ranges.
 - a. From this point forward you can treat the cast just like any other type of cast.

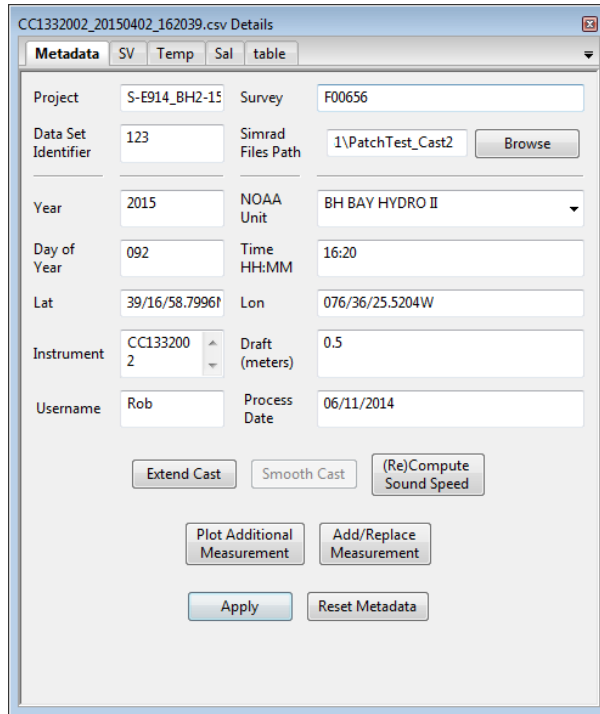


Figure 7, Metadata setup for loaded casts.

11. Once you've applied metadata and verified the data, you are free to export / append the data to a HIP *.svp file, or perform any other steps you wish.

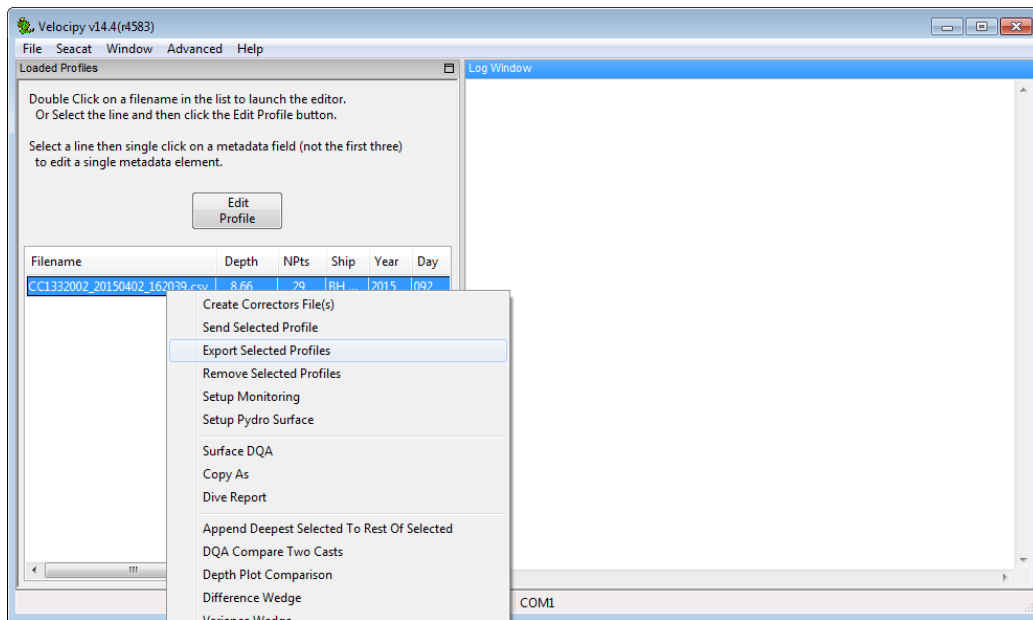


Figure 8, File options for CastAway *.csv file loaded into Velocipy.